

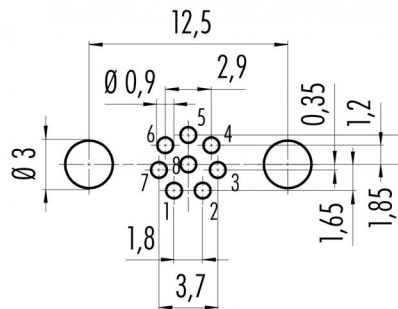
Product description **M8 male panel mount connector, Contacts: 8, shieldable, with shield plate, dip-solder, IP67, M8x1.0, front mounting**

Area **M8 series 718**
Order number **86 6319 1120 00008**

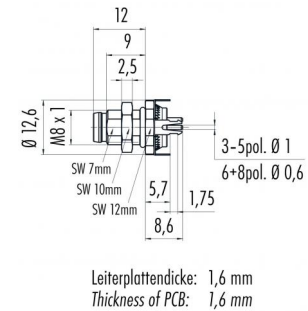
Illustration



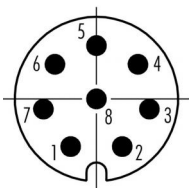
Conductor layout



Scale drawing



Contact arrangement (Plug-in side)



| | X | Y |
|---|-------|-------|
| 1 | -0,90 | -1,65 |
| 2 | 0,90 | -1,65 |
| 3 | 1,85 | -0,35 |
| 4 | 1,45 | 1,20 |
| 5 | 0 | 1,85 |
| 6 | -1,45 | 1,20 |
| 7 | -1,85 | -0,35 |
| 8 | 0 | 0 |

You can find the assembly instructions on the next page.

Technical data

General values

Notice

Please note that, due to the change from the old to the new order number, there may be deviations in the technical specifications. For questions about product details, please use the 'Contact Customer Service' form on the right.
male panel mount connector
bolted / snap
dip-solder
85 °C
- 40 °C
85369010
20

Connector design
Connector locking system
Termination
Upper limit temperature
Lower limit temperature
Customs tariff number
Packaging Unit

Electrical values

Rated current (40 °C) 1.5 A
Rated voltage 30 V
Rated impulse voltage 800 V
Pollution degree 3
Overvoltage category II
Insulating material group II
EMC compliance shieldable, with shield plate
Degree of protection IP67
Mechanical operation > 100 Mating cycles

Product description **M8 male panel mount connector, Contacts: 8, shieldable, with shield plate, dip-solder, IP67, M8x1.0, front mounting**

Area **M8 series 718**
Order number **86 6319 1120 00008**

Technical data

Material

| | |
|-----------------------|--|
| Contact material | CuZn (brass) |
| Contact plating | Au (gold) |
| Contact body material | PA |
| Housing material | Zinc die-cast nickel-plated |
| REACH SVHC | CAS 80-05-7 (4,4'-isopropylidendiphenol) CAS 7439-92-1 (Lead) CAS 61788-32-7 (Terphenyl, hydrogenated) |

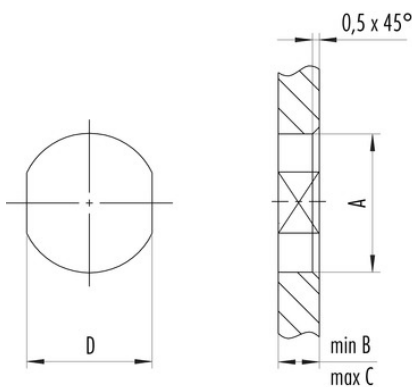
Product description **M8 male panel mount connector, Contacts: 8, shieldable, with shield plate, dip-solder, IP67, M8x1.0, front mounting**

Area **M8 series 718**
Order number **86 6319 1120 00008**

Assembly instructions / Panel cut-out

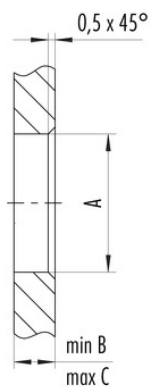
1. Einbauvorschlag

Mit Fläche als Verdrehschutz



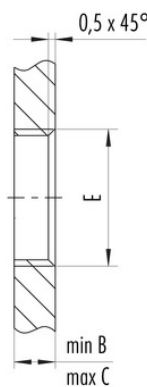
2. Einbauvorschlag

Mit Durchgangsbohrung



3. Einbauvorschlag

Mit Gewinde, einschraubbar



| Gewinde E | A | B | C | D |
|------------|------|-----|-----|------|
| M8 x 1 | 8,1 | 2,0 | 3,5 | 7,1 |
| M10 x 0,75 | 10,1 | 2,0 | 6,5 | 9,1 |
| M12 x 1 | 12,1 | 2,5 | 4,5 | 10,0 |

Anzugsdrehmoment 1 Nm

| | |
|---------------------|--|
| Product description | M8 male panel mount connector, Contacts: 8, shieldable, with shield plate, dip-solder, IP67, M8x1.0, front mounting |
| Area | M8 series 718 |
| Order number | 86 6319 1120 00008 |

Security notices

The connectors are designed for use in plant, control system and electrical equipment. The end user is responsible for checking whether the connectors are suitable for use in other applications.

Connectors with degree of protection IP 67 and IP 68 are not suitable for use under water. When used outdoors, the connectors must be separately protected against corrosion. For further information about IP degrees of protection refer to 'Technical support' in the Download Centre.